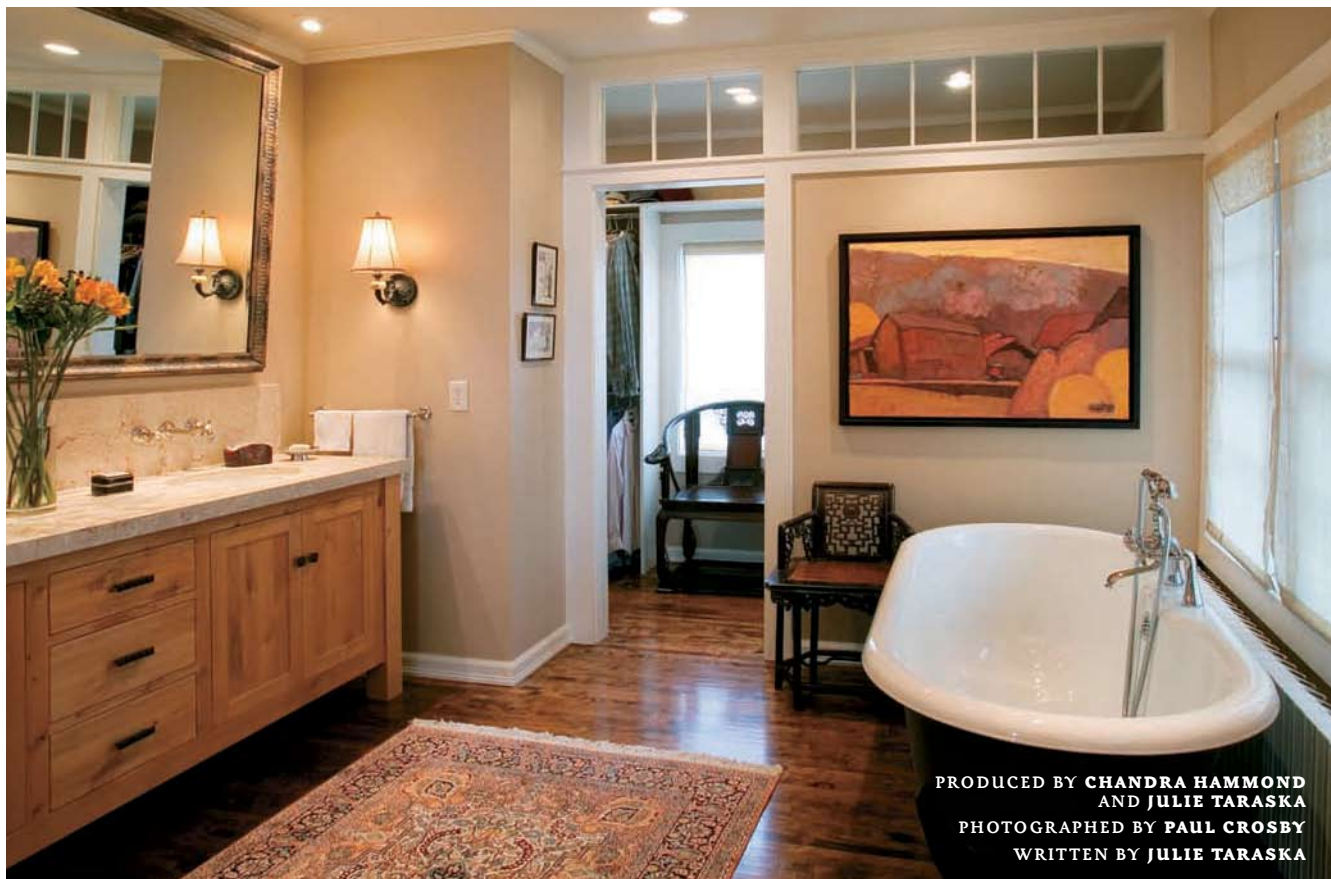


# second go 'round

to remedy a misguided '80s redo, the owners of a Minneapolis master bath drew on their home's elegant 1906 style



PRODUCED BY **CHANDRA HAMMOND**  
AND **JULIE TARASKA**  
PHOTOGRAPHED BY **PAUL CROSBY**  
WRITTEN BY **JULIE TARASKA**

**W**hen Karen and Steve Sonnenberg purchased their 1906 Tudor in Minneapolis, their first goal was to rectify a garish '80s modernization of the 5,000-square-foot, three-story house. Particularly dire was the 200-square-foot master bathroom, which had been stripped of original details, such as its leaded windows, and outfitted with a plum-colored tub, toilet, and sink. With the help of local design team Gabriel Keller and Lars Peterssen of Domain Architects, the Sonnenbergs re-established the room's romantic vintage style and created a showcase for their collection of Asian antiques. They also gained modern conveniences, including a 50-square-foot dressing area and closet, and increased the amount of storage and counter space.

**ABOVE** At the far end of the revamped bath, fixed transoms funnel light into a new walk-in closet. The walls' warm camel color is echoed in the Oriental rug, the window shades (made from an Indian sari), and the burnished tones of the gilt-framed mirror and knotty alder vanity. The new freestanding clawfoot tub is fitted with a classic bath mixer and handshower.

**LEFT** A plum-colored pedestal sink and 1980s casement windows didn't suit the historic house.



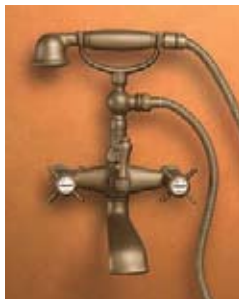
BEFORE

The new WC, formerly a master-bedroom closet, features a brick chimney wall uncovered during the renovation. Orb-shaped pendants from India illuminate the space and add a decorative touch. A fixed transom above the door mimics those elsewhere in the bath. And tumbled Sylvester Pink marble tops the vanity and forms its backsplash.



## style to go: bath-shower mixers

Bath taps with a telephone-style handheld shower date back to Victorian times, when indoor plumbing was a luxury. Today's wall- and deck-mounted versions come in a wide range of finishes.



**EXPOSED TUB AND HANDSHOWER SET** shown in weathered brass finish. 930 series. \$752–\$1,051. Newport Brass; 949-417-5207, [newportbrass.com](http://newportbrass.com).



**FINIAL TRADITIONAL BATH FAUCET WITH HANDSHOWER** shown in chrome finish. \$1,084–\$1,736. Kohler; 800-456-4537, [kohler.com](http://kohler.com).



**BEACON EXPOSED TUB MIXER WITH HANDSHOWER** shown in nickel finish. \$735–\$1,250. Waterworks; 800-899-6757, [waterworks.com](http://waterworks.com).



**PALACE BATH FILLER** shown in polished chrome finish. \$550–\$715. Porcher; 866-455-6118, [porcher-us.com](http://porcher-us.com).





A roomy shower with a fixed, windowlike panel and clear-glass door is located across from the WC; its inside is lined with white ceramic subway tiles and accented by two borders of tumbled, cream-colored Durango Travertine mosaic tiles. The trimwork within the stall, including the door frame and “window” muntins, are made of water-resistant solid surfacing.

## floor plans

1. A jetted tub overwhelmed the 200-square-foot master bath, which also lacked storage space.
2. By placing a clawfoot tub next to the window, the architect made room for a 7½-foot-long-by-2-foot-deep double vanity. A closet was added to one end of the room, while an old toilet compartment became a 5-by-6-foot shower. A master bedroom closet was reoriented, plumbed, and turned into a WC.

